



# NSRCFUND NEWSLETTER

COMMEMORATE THE PAST - EDUCATE FOR THE FUTURE

VOLUME 28

FALL 2020

## CONGRATULATIONS TO THE CLASS OF 2020

### Continue to Pursue Your Dreams

From the Greater Seattle Awards Committee

We were so excited NSRCF decided to return to the Greater Seattle area for its 40th anniversary. The local awards committee is a passionate and thoughtful group, comprised of community and education leaders who genuinely care about helping students gain access to higher education. Many of us were also first-generation college students and we chose to serve on this committee because of the huge opportunity for us to give back and pay it forward.

Southeast Asian students are faced with barriers and challenges around language, gaps in mental health treatment, race-based bullying, and harassment that prevent many of them from obtaining higher education. To that end, we worked hard to ensure an inclusive, accessible process, including providing workshops and tools to help students fill out the application.

It was with great pride that we awarded \$71,500 to 66 Southeast Asian students – the largest group in NSRCF’s history! The students’ stories were so compelling

that we personally contributed and raised approximately \$15,000 from the local community. We also dedicated \$5,000 of the locally raised funds to provide scholarships to four Pacific Islander students.

Thank you to the families, teachers, and advisors who worked tirelessly to support them. Thank you, students, for sharing your stories, hardships, and goals with us. It was inspiring to learn how much you have overcome, how you rise above the noise to reach your goals, and the ways you give back to your families and communities. We hope that you will continue to do so and someday pay it forward to the next generation of students. A lot of people care about you and are rooting for you. No matter how hard the journey gets, lean into resilience, and continue to pursue your dreams.



### Black Lives Matter

The Seattle Awards Committee would like to take a moment to reflect on the racial injustices that are happening in our nation amidst this pandemic. We as Asian Americans and Pacific Islanders stand in solidarity with the Black Community and condemn the violence they face. While the struggle for racial equality and justice is ongoing, the turbulence of the past months must not overshadow the accomplishments of this year’s recipients. Your journey brought you to intersect with us, and we encourage each of you to continue to share your voices and stories. We believe that each of you exemplifies the best of the purpose and work of the NSRCF.



# AN HONOR TO WORK WITH THE SEATTLE AWARDS COMMITTEE

## Islanda Khau Naughton, board member

I first joined the NSRCF local committee in Seattle in 2010 to organize for the 2011 awards and was so moved by the mission that I wanted to continue my commitment to this organization. When I moved to Boston in 2011, fellow board member and friend, Phitsamay Sychitkokhong Uy, invited me to serve on the board and I have been involved ever since.

I've had the pleasure of attending a few of the award ceremonies over the years and am continuously humbled to meet so many resilient and ambitious individuals. It is one of the highlights of being on the board.

I moved back to Washington a few years ago and was excited when the board announced it chose the Greater Seattle area to be the scholarship destination for our 40th anniversary. What was even more amazing was that folks from the 2011 local committee agreed to serve again this year! I am so honored to have worked with such a compassionate and dedicated group of people. In January, I gave birth to my second son, so I had to step away

to care for my family. The committee continued its work and went above and beyond. These remarkable individuals will always have a special place in my heart.

The culmination of all the hard work led us to award \$76,500 to 70 students – the largest amount ever given to the largest number of students. These highly qualified students exemplify resilience, intelligence, and community.

**To the class of 2020 - in times of darkness, societies have searched for and found beacons of light. You are those beacons.**

**Congratulations and good luck!**

# MASU SASAJIMA, Nisei, Seattle

I'd like to add my congratulations to the high school class of 2020 for your achievements and graduation. I would be remiss in also not acknowledging the significance of this year's world-wide pandemic on your lives and future. My father always told us that learning never ends and we were enriched by our love of reading, but also by the diversity of family friendships and other people from other racial, ethnic, and religious backgrounds. My older sisters were not able to continue their educations after the war because of family circumstances,



but my younger brothers and I were the recipients of their sacrifice. This taught me to give to others who struggle for an education, not unlike the Nisei founders of the NSRCF. A mentor once said that there were no problems, only challenges and

opportunities. You have already demonstrated your own strengths to overcome obstacles and this will keep you in good stead as you face the future. Best wishes to you for the courage to lead a life of hope and optimism.

# GREETINGS FROM THE BOARD

Dear NSRCF supporters and friends,

**Congratulations to the Class of 2020!** What an amazing milestone, accomplished during a pandemic and the broadening movement to end systemic racism. On the 40th anniversary of the NSRCF, a record 70 scholarships totaling another record \$76,500 were awarded to outstanding high school seniors from Greater Seattle.

The board is grateful to member, **Islanda Khau Naughton**, who lives in the Seattle area, for her leadership and guidance of the local scholarship awards committee. Islanda and several members of the committee also worked on the 2011 awards committee, the last time the Fund was in Seattle. **Thank you so much** to this year's committee members: Linda Ando, Bopha Cheng, Rahul Gupta, Maekara Keopanapay, May Lukens, Bely Luu, Charlene Mano Shen, Gabe Nishimura, Rattana Noeun, May Saetern, Ekkarath Sisavatdy, Khamp Southisombath, Bill Tashima, Jeff Thungc, and Star Wang. The committee locally raised enough funds to award four scholarships to seniors in the Pacific Islander community. That endeavor was spearheaded by Naomi Mulitauaoepe Tagaleo'o, CEO of Education with Purpose Foundation for Pacific Islanders, along with Andrea Iosua-Tinae, Lindsay Tuiasosopo, Matthew Vaeena, and Ivo Vongsaveng.

We cannot do the Fund's work without a committed, energized and well organized local committee

and this year was no exception. Overcoming numerous obstacles, functioning during a pandemic, not meeting in person, working in isolation from home, calming anxious high school seniors whose schools were abruptly shut down ("How can I get my transcript? How can I get a recommendation?"), and the general uncertainty of life, the committee did an outstanding job.

Early on in the process the local scholarship committee knew that the awards ceremony had to be canceled due to covid-19. In lieu of an in-person program to celebrate this year's recipients, the committee designed a terrific "Awards Gallery" on the website that we encourage you to watch: [www.nsrcfund.org/scholarships/2020-awards](http://www.nsrcfund.org/scholarships/2020-awards). We are so appreciative!!

The NSRCF board of directors remains an all-volunteer group committed to keeping operating costs to a minimum so that donations to the Fund go primarily towards scholarships. (The NSRCF's financial statement is made available upon written request.) Even in these uncertain times, the Fund is holding steady at just over \$2 million (as of July 31, 2020).

This year's appeal letter is contributed by President **Paul Watanabe**, as excerpts from his virtual speech given in congratulations to the Greater Seattle scholarship recipients.

The board is pleased to announce that the 2021 scholarship awards

will be given in the great state of Rhode Island. Thanks to member Phitsamay Uy, initial contact has been made with ARISE, the Alliance of Rhode Island Southeast Asians for Education and its powerhouse Executive Director, **Chanda Womack**. We are hopeful for a coronavirus-free endeavor, including an in-person awards ceremony next year.

Heartfelt condolences are extended to the families of **Akio Mochizuki** and **Colonel Joseph Y. Kurata**, both of San Francisco. Mr. Mochizuki passed away on July 18, 2020 at age 99. He was a longtime supporter of the NSRCF, and established the Hisaye Hamaoka Mochizuki Scholarship in honor of his late wife. Colonel Kurata passed away on August 23, 2020 at age 98. He established the Colonel Joseph Y. Kurata Scholarship in 2015, "After reading the scholarship recipients' educational and career goals, I was inspired to support your worthy program."

Lastly, thank you to the Fund's supporters on this 40th anniversary. Your affirmation of our work inspires us during these chaotic and unparalleled times. We have two objectives – award scholarships and tell our story. The NSRCF was born in the US concentration camps and draws a straight, unwavering line from 1942 to today. It is fitting that 1980 was also the year that Congress established the Commission on Wartime Relocation and Internment

*continued on next page*



## GREETINGS FROM THE BOARD *cont'd.*

of Civilians. The Commission concluded that the decision of the United States Government to forcibly remove and incarcerate 120,000 Americans of Japanese ancestry was based on "racial prejudice, wartime hysteria, and a failure of political leadership." Failure of political leadership. Unnervingly prescient. There is still much work to do.

Our sense of "ongaeshi" (repaying a kindness) is strong, but our ability to do so depends on your support. Stay well, social distance, wash your hands, and wear a face mask.

In grateful appreciation,

NSRCF Board of Directors  
Paul Watanabe, President  
Stephen Y. Hibino, Treasurer  
Jean Y. Hibino, Executive Secretary  
Kesaya E. Noda, Recording Secretary  
Elizabeth Sequenzia Hibino  
Islanda Khau Naughton  
Yutaka Kobayashi  
James McIlwain  
Laura H. Misumi  
Keith Schuricht  
May O. Takayanagi  
Phitsamay Sychitkokhong Uy

### HOMER YASUI, Nisei, Seattle

#### Well done, Nisei Student Relocation Commemorative Fund.

For me, one of the most heartwarming results of the help so freely given to them by strangers so long ago, is that the founders of the Nisei Student Relocation Commemorative Fund remembered what their parent's had taught them about On --- the obligation to repay acts of kindness.

So, many years ago, those former Nisei college students established this fund as an act of ongaeshi - the obligatory repayment for favors received in the past. Rather than making these repayments to the descendants of the founders of the National Japanese American Student Relocation Council of 1942, the NSRCF has paid it forward. Since



1980 it has been awarding monetary scholarships to high school seniors of Southeast Asian extraction, to help them pay for their college expenses. The supporters of the Nisei Student Relocation Commemorative Fund have remembered how much it once meant to them when help was so badly needed.

And that makes my heart swell with pride.

THE NISEI STUDENT  
RELOCATION  
COMMEMORATIVE  
FUND CALLS UPON  
ALL AMERICANS TO  
STAND TOGETHER  
IN SOLIDARITY WITH  
OUR NATION'S BLACK  
COMMUNITIES.

BRING RACISM TO ITS  
KNEES.

**BLACK  
LIVES  
MATTER**

NSRCF Board of Directors

### PETER TRINH, 2008 NSRCF recipient, Arizona

Thank you and congratulations on forty years! May this fund continue to further education, love, and hope.

Thank you for showing us that the challenges we face today do not have to hold us back tomorrow.

# HUY PHUNG, 2011 NSRCF recipient, Seattle

To the class of 2020 – Almost 30 years ago, I was in your shoes on my way to college struggling to find my path in life. I was still trying to figure out what I wanted to be, what I wanted to do, all while trying to figure out how to pay for college. Receiving the NSRCF scholarship was a huge gift that lightened the burden as I tried to make my way into a brave new world.

While many things were similar, you have had so many more challenges to deal with in 2020. You've had a once in a century pandemic, a civil revolution sweeping the nation, and a global recession to deal with ... all while trying to graduate.

The road to success is never short nor simple. It is always long and arduous. There are many paths to your destination, but all paths have one thing in common. They all begin with one step.

Congratulations on being awarded the 40th anniversary Nisei Student



Relocation Commemorative Fund scholarship. I hope this gift helps you with the first step to success as it helped me many years ago!

---

## WHAT YOU CAN DO TO HELP THE NSRCF

The Nisei Student Relocation Commemorative Fund needs your support. Donations are the life blood of our scholarship program and allow us to support deserving students as they move from secondary school into higher education. Contact us by mail or email [info@nsrcfund.org](mailto:info@nsrcfund.org) if you would like further information about giving. You can also donate via PayPal online at [nsrcfund.org/support/donate](https://www.nsrcfund.org/support/donate).



NISEI STUDENT RELOCATION COMMEMORATIVE FUND, INC.  
19 Scenic Drive, Portland, Connecticut 06480

Enclosed is a tax-deductible donation of \$ \_\_\_\_\_

To an existing Tribute, Legacy or Named Scholarship Fund called:

\_\_\_\_\_

To the General Fund.

(Please make check payable to NSRC Fund. You may also use PayPay at [www.nsrcfund.org](http://www.nsrcfund.org))

Tell me how to establish a Tribute, Legacy and Named Scholarship Fund.

Tell me how to donate appreciated stock.

Please email the annual newsletter: \_\_\_\_\_

Name(s) \_\_\_\_\_

Address: \_\_\_\_\_

City/State/Zip: \_\_\_\_\_ Phone: \_\_\_\_\_

# CONGRATULATIONS TO THE 2020 NAMED SCHOLARSHIP RECIPIENTS

## Samirah Apdalhaliem (Cham), Renton HS

Kaizo and Shizue Naka Scholarship



As a Muslim woman of Asian descent and daughter of Vietnamese refugees, Samirah is keenly aware of the importance of education and being proud of her heritage. In high school she received outstanding grades, worked part-time, and implemented new

programs for the youth in her community. She was a Peer Mentor, active in HOSA, and participated in several internships including cancer research, Southeast Asian Women camp, and computer programming. She continues to actively seek out opportunities available to underrepresented minorities. Samirah is attending the University of Washington to pursue her interest in public health and biology.

## Uyen Dao (Vietnamese), Lincoln HS, Tacoma



Koh, Mitsu and Dr. Kotaro Murai Scholarship

Uyen arrived with her family from Vietnam in 2014. She found her voice by getting involved in the Vietnamese dance group and youth group at her church. Uyen established the first student-led health

club in her school district. She was also a member of National Honor Society, Key Club, Upward Bound, and Outdoor Adventure Club. She volunteered at Tacoma General Hospital, Vietnamese Language School, Youth Faith Formation Program, youth choir, and youth dance group. Uyen is attending the University of Washington to pursue a career as a traveling doctor advocating for affordable and easier access to healthcare in developing countries.

## Lily Duong (Vietnamese), Highline HS, Des Moines

Audrey Logan Scholarship



As the first in her family to attend college, Lily worked hard to achieve excellent grades and be involved in school. She was a member of Tutor Team, Link Crew, Key Club, National Honor Society, and president of the Marine Biology Club. She also helped take care of her

younger siblings and worked in the family restaurant. Her experiences growing up Vietnamese have taught her to push for equal access and to encourage students like her to pursue higher education. She plans to be a teacher and is attending Western Washington University as a Future Woodring Scholar majoring in Elementary Education.

## Lisa Ha (Vietnamese), Kent-Meridian HS, Kent

Tama (Yoshimura) and Jiro Ishihara Scholarship



Raised by her single immigrant mom, Lisa was determined to be the first in her family to go to college. She was in Upward Bound, DECA, Interact Club, Japanese Club, and Girls Who Code Club. She volunteered at the local library, co-leading a service

project that positively impacted nearby elementary schools, and coded a scholarship resource website to help her peers. Lisa hopes to encourage students from underrepresented and underserved communities to explore STEM, college access, and career opportunities. She plans to become a software engineer and is attending Pacific Lutheran University, pursuing a degree in Computer Science.

*continued on next page*



# 2020 NAMED SCHOLARSHIP RECIPIENTS *cont'd.*

**Tracy Ha (Vietnamese), John R. Rogers HS, Spokane**  
Kay Yamashita Scholarship



Tracy maintained a 4.0 GPA at the high school and college level while demonstrating her leadership skills in the National Honor Society, Key Club, Varsity Tennis, Skills USA, and the Vietnamese Buddhist community. As the daughter of immigrants, Tracy spent

hours helping in her mother's nail salon, and along with an internship at an urgent care clinic and visiting a developing country, her desire to serve underrepresented populations was affirmed. Working with Doctors Without Borders is one of her goals. Tracy is attending Stanford University majoring in the health sciences with the intent of becoming a pediatric surgeon.

**Ravipon Khampradith (Lao), Federal Way HS**  
Lafayette and Mayme Noda Scholarship



Growing up in a household where higher education was emphasized Ravi worked hard to balance school, sports and work. While in high school he was also a Running Start student at Highline College and a member of the Phi Theta Kappa Honor Society. He

was active in Key Club, and on the varsity track and field teams. He enjoyed being involved in the Lao community, teaching music and dance to Lao youth and volunteering at community events. He started his own photography business as a way to earn work experience and to express himself creatively. Ravi is attending Arizona State University's Ira A. Fulton Schools of Engineering studying product/industrial design.

**Julina Lang (Khmer), West Seattle HS**  
Dr. Kenji Murase Scholarship



Taking care of her ailing grandmother helped Julina realize she could be a positive role model and mentor in her community. She was an active leader in Link Crew, interned at Hiawatha Community Center and Delridge Community Center, and

worked at the Boys and Girls Club and White Center Community Center. Weekends found her helping the Khmer community by participating at the Khemarak Pothiram Temple. She says, "Through my experiences with my grandma, I was able to reconnect with my family, community and Khmer roots." Julina is attending the University of Washington pursuing a degree in Public Health.

**Perseus Nguyen (Vietnamese), Evergreen HS, Seattle**  
American Friends Service Committee Scholarship



Perseus says, "I have always had the goal to prove others wrong about myself as well as leave behind a legacy." Perseus' community work included Ecology Youth Corps, cleaning up the sides of roads, supporting the LGBTQ+ community, and commissioning art for a

5K run/walk. They were the president of the Evergreen LGBTQ+ club, a member of the Outdoors club, and participated in track and field. Their wide-ranging interests include art, animals, nature, music, theater/acting, politics, law, and government. Perseus plans to attend Central Washington University "to hopefully pursue a career that makes me happy."

*continued on next page*

# 2020 NAMED SCHOLARSHIP RECIPIENTS *cont'd.*

**Sofia Nguyen (Vietnamese), Franklin HS, Seattle**  
Gladys Ishida Stone Scholarship



Sofia is an academic standout, active in Health Club, track and field, Upward Bound and National Honor Society. She is passionate about social justice and science. She painted murals in her community to express her activism, and participated

in the Genome Sciences Internship at the University of Washington and the Political Science Academy at her school. She advocated for equitable science curriculums throughout the Seattle public school district as part of the Science Adoption Committee. Sofia is attending the University of Washington studying pre-health sciences and ethnic studies with a goal to build diversity in the medical field.

**Thanh-Thanh Nguyen (Vietnamese), Franklin HS, Seattle**

Colonel Joseph Y. Kurata Scholarship



If Thanh-Thanh can say one thing about herself is that she perseveres. She will be the first to admit that she can sometimes be “disconnected” from her Vietnamese community. Even so, she would like to travel to Vietnam for the first time and to go with her

mother, “My ethnicity is an important part of my identity, it makes me who I am, what I am, and greatly impacts my life.” She perseveres - learning Vietnamese and volunteering as a library assistant and teacher’s assistant. Taking baby steps never intimidates her. Thanh-Thanh’s dream is to become a nurse. She is attending Seattle Central College.

**Kristy Nhan (Vietnamese, Chinese), Kentridge HS, Kent**

Hisaye Hamaoka Mochizuki Scholarship



While achieving high honors and numerous academic awards in school, Kristy is also passionate about serving the community and giving back. In high school Kristy held leadership positions in Key Club and National Honor Society, and was the founder and

president of STEM Careers Club. As the daughter of immigrant parents, she experienced firsthand the need for Seattle’s immigrant and refugee communities to be able to access and learn to use technology. By being a role model, Kristy hopes to encourage girls and young women to explore STEM careers. She is attending the University of Washington’s Paul G. Allen School of Computer Science & Engineering.

**Linda Phan (Vietnamese), Garfield HS, Kent**

Yutaka and Maureen Kobayashi Scholarship



Linda was actively involved with Student Government, Vietnamese Student Distributive Education Clubs of America, National Honor Society, varsity gymnastics, and varsity track and field. She was appointed to the Seattle Youth Commission that

connects youth to local elected officials. She also volunteered with Post 84, the Service Board, Global Visionaries, and Girl Up Puget Sound. Linda says, “My marginalized background allowed me to better understand societal inequalities.... I want to join the influx of diverse leaders in Congress ... where the faces of politics are ones that kids like me can look up to.” She is attending Pomona College majoring in Political Science.

*continued on next page*



# 2020 NAMED SCHOLARSHIP RECIPIENTS *cont'd.*

**Phuong Phan (Vietnamese),  
John F. Kennedy Catholic HS, Burien**  
Michi Nishiura Weglyn Scholarship



Joining the Eucharistic Vietnamese Youth Movement helped Phuong recognize her leadership abilities. She was president of her senior class, president of the Human Relations Club, and president of the Chamber Orchestra. She also worked part-time,

advocated for common sense gun control, was an ACLU Advocacy Institute alumni, and Senate page. One of her proudest achievements was organizing a protest in her town to try to prevent an undocumented immigrant from being detained. The experience reminded her of the injustices her own immigrant parents faced and she is determined to acquire the skills to empower her community. Phuong is attending the Honors Program at the University of Washington majoring in Political Science and History.

**Michelle Saechao (Khmer, Mien),  
Lindbergh HS, Renton**  
Alice Abe Matsumoto Scholarship



As the daughter of refugees, Michelle says that spending a lot of time helping her parents and grandparents navigate life in America taught her the importance of higher education. In high school she worked hard to maintain a 3.9 GPA while involved in Key Club,

HOSA, National Honor Society, Lindbergh Orchestra and an Eagle Crew mentor. She volunteered at Renton Park Elementary School and the Department of Social and Health Services. She received numerous academic, music, and community service awards. Michelle is a first generation college student attending Highline College, planning to obtain her Bachelor of Science in Nursing.

**Flora Saelor (Mien, Thai), Rainier Beach HS, Seattle**  
Nobu (Kumekawa) and Yosh Hibino Scholarship



Flora values hard work and kindness, as evidenced by her volunteer work with the Lu-Mien Community Center and Asian Counseling Referral Services. She continuously pushed herself as an International Baccalaureate Diploma Programme student. Due to

her family situation she also played an important role at home, and worked part-time to help pay bills. Joining the College Success Foundation provided her with support and help on a college and career path. Flora hopes to become a psychologist so she can improve herself while helping others to do the same. She is attending Pacific Lutheran University majoring in Psychology.

**Pan San (Burmese, Karen, Thai), Ferris HS, Spokane**  
Ryozo Glenn Kumekawa Scholarship



Pan and her family arrived in the U.S. in 2007 from a Thai refugee camp. Her family always encouraged and supported her and she takes inspiration from her grandmother who is blind. Pan is determined to help her by helping others. She is an active member of her

community working as a tutor and an interpreter, helping people with translations and paperwork. In high school she enjoyed volunteering at an elementary school. Pan's goal is to help people with medical treatment, and she attended NEWTech Skills Center to study pre-medical assisting. She is attending Spokane Community College with the long term goal of a career in the medical field.

*continued on next page*

## 2020 NAMED SCHOLARSHIP RECIPIENTS *cont'd.*

**Leah Tran (Vietnamese, Teochew - Chinese),  
Lincoln HS, Tacoma**

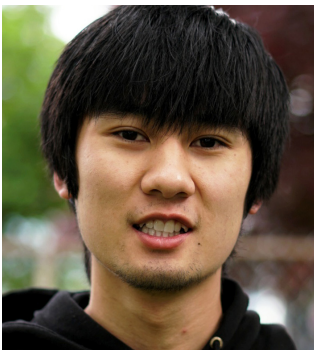
Shim and Chiyo Hiraoka Scholarship



“I am extremely appreciative to be a first generation Asian American student, and strive to surpass the expectations my parents set for me.” Leah was an active member of Key Club, Upward Bound, and Running Start at Tacoma CC. She and a group

of friends established the Southeast Asian Student Association to embrace their cultures through promoting unity and pride. Leah volunteered with Greater Tacoma Community Foundation - Youth Philanthropy Board, and Pierce County Juvenile Detention Center - Diversion Program to help youth and their families navigate the criminal justice system. She is attending the University of Washington majoring in Education and American Ethnic Studies, and plans to become an educator and youth mentor.

**Kovit Virivong (Lao), The Northwest School, Seattle**  
Hiroko Fujita and Paul Fukami Scholarship



Persistence, curiosity and passion are important to Kovit. He is more than just the son of immigrant parents and a hard working student at the top of his class. He brought Lao representation to the International Student Union, volunteered with the API

Interest Group, worked as a student advisor and SSAT Prep teacher with Rainier Scholars, and proudly learned how to make art with wax. He tutored youth at a local library, enjoys taking photos, and his favorite activity is working on his car. He says, “I want to inspire Lao youth and show that they can surpass their limits.” Kovit is attending Pomona College to study neuroscience.

**Tuyet-Nhi Vo (Vietnamese),  
Rainier Beach HS, Seattle**

Michihiko and Bernice Hayashida Scholarship



Daughter of a single mom, Tuyet-Nhi says, “Like my family, I also think that knowledge is something that can never be taken away from me.” She was an officer on the Associated Student Body and Key Club, a youth leader and intern for the Asian Pacific Islander

Coalition Advocating Together for Health (APICAT), and a regular volunteer for the nonprofit, Got Green. During her senior year, she carried a full collegiate load while working two part-time jobs. Tuyet-Nhi is the first in her family to attend college. She is attending Western Washington University to become a community health educator.

**Chelsea Vorng (Khmer), Highline HS, Des Moines**  
David Mitsuo Takagi Scholarship



During high school Chelsea was a tutor, member of the National Honor Society, jazz band, Associated Student Body, and Link Crew. She also played basketball and tennis, and was on the swim team. A teacher wrote, “Chelsea’s curiosity and attention to

detail will ensure her success in research science, and her dedication to service and community will allow her to form connections with others that will be crucial to proposing and creating systemic change.” Chelsea is attending the University of Washington to study neuroscience, “I hope to do research on mental health, and use it to bring affordable treatments and therapies to the Khmer community, along with other communities of color.”

# 2020 GENERAL SCHOLARSHIP RECIPIENTS

**Asigiah Aly (Cham),**  
Franklin HS, Seattle

**Anna Bun (Khmer),**  
Interlake HS, Bellevue

**Brian Cao (Vietnamese),**  
Edmonds-Woodway HS, Edmonds

**Kim Cao (Vietnamese),**  
Evergreen HS, Seattle

**Cam Che (Vietnamese, Chinese),**  
Franklin HS, Seattle

**Bryan Duong (Vietnamese),**  
Hazen HS, Renton

**Erianha Esteban (Khmer, Filipino),**  
Franklin HS, Seattle

**Aaron Fhong (Mien, Thai),**  
Chief Sealth International HS, Seattle

**Alexis Friedman (Khmu),**  
Hazen HS, Renton

**Brian Ho (Vietnamese),**  
Cascade Senior HS, Everett

**Henry Ho (Vietnamese),**  
Garfield HS, Seattle

**Andy Hoang (Vietnamese),**  
Lincoln HS, Tacoma

**Doan Hoang (Vietnamese),**  
Woodrow Wilson HS, Tacoma

**Lilli Huong (Khmer),**  
Franklin Pierce HS, Tacoma

**Hayley Gin Iglecias (Chamorro),**  
Federal Way HS, Federal Way

**Vinial Kumar (Fijian),**  
Kent Meridian HS, Kent

**Nhung Lam (Vietnamese),**  
Mountlake Terrace HS,  
Mountlake Terrace

**Emily Le (Vietnamese, Chinese),**  
Juanita HS, Kirkland

**Jameel Le (Cham, Chinese),**  
Lindbergh HS, Renton

**Tuoi Le (Vietnamese),**  
River Ridge HS, Lacey

**Paulina Mao (Khmer),**  
Lincoln HS, Tacoma

**Chalee Moua (Hmong),**  
John R. Rogers HS, Spokane

**Jazlyn Munoz (Khmer, Hispanic),**  
Fife HS, Fife

**David Nelson-Leang (Khmer),**  
Lynnwood HS, Bothell

**Anna Nguyen (Vietnamese),**  
Franklin HS, Seattle

**Bao-Tran Nguyen (Vietnamese),**  
Cleveland HS, Seattle

**Doan Nguyen (Vietnamese),**  
Edmonds-Woodway HS, Edmonds

**Hannah Nguyen (Vietnamese),**  
Edmonds-Woodway HS, Edmonds

**Kenny Nguyen (Vietnamese),**  
Summit Sierra HS, Seattle

**Nike Nguyen (Vietnamese),**  
Interlake HS, Bellevue

**Vanny Nguyen (Vietnamese),**  
Lynnwood HS, Bothell

**Vy Nguyen (Vietnamese),**  
Hazen HS, Renton

**Brenda Pham (Vietnamese),**  
Kent Meridian HS, Kent

**Cynthia Pham (Vietnamese),**  
Ingraham HS, Seattle

**Hana Phan (Vietnamese),**  
Meadowdale HS, Lynnwood

**Leo Scott-Rifer (Khmer),**  
Summit Sierra Public School, Seattle

**Hewah Soe (Burmese, Karen),**  
Joel E. Ferris HS, Spokane

**JaLyssa Tiengkamsaly  
(Lao, Vietnamese),**  
Stadium HS, Tacoma

**Jasmine Tran (Vietnamese),**  
Tahoma HS, Maple Valley

**Kevin Tran (Vietnamese),**  
Cleveland STEM HS, Seattle

**Selena Tran  
(Vietnamese, Chinese),**  
Lincoln HS, Tacoma

**Vivian Tran (Vietnamese),**  
Lindbergh Senior HS, Renton

**Emily Un (Khmer),**  
Chief Sealth International HS, Seattle

**Phuong Uyen Nguyen Vo  
(Vietnamese),**  
Rainier Beach HS, Seattle

*continued on next page*



## 2020 GENERAL SCHOLARSHIP RECIPIENTS *cont'd*

**Vivian Vo (Vietnamese),**  
Hazen HS, Renton

**Madison Vu (Vietnamese),**  
North Thurston HS, Olympia

**Mia A. Yi (Khmer, Korean),**  
North Thurston HS, Olympia

**Kevin Vu (Vietnamese),**  
Hudson's Bay HS, Vancouver

**Akina Yada (Micronesian),**  
Evergreen HS, Seattle

---

### MIRIAM, GEOFFREY AND EMILY MURASE, Dr. Kenji Murase Scholarship

#### Congratulations on the 40th Anniversary of NSRCF

Our father, Kenji Murase, who served on the board of directors of NSRCF, once told us that his proudest achievement in life was helping to administer the Fund. He instilled with us the value of having a good education and it's great to see that the fund continues to reward deserving students and help them on their educational journey. We wish the fund continued success in promoting higher education among students of Southeast Asian descent.



### KEITH SCHURICHT, Board Member

As the challenges facing society multiply, we are collectively bombarded by sound bites, headlines, and tweets espousing “this solution” or “that quick fix” to life’s every problem. People of all ages, walks of life, and political leanings now share myriad competing opinions spanning epidemiology,

economics, and sociology. As global citizens, however, we need to understand others’ perspectives and concerns. We need a critical mass of critical thinkers. At the macro level, the ramifications of individuals’ behaviors on others is painfully obvious. To push forward, we must learn to communicate beyond echo chambers. Society broadly must learn to learn.

Though the breakdown of civil discourse has obscured the path

forward, the importance of education remains clear. The NSRCF’s belief in the primacy of education remains unwavering. As a board member of seven years, I am honored to continue supporting the educational goals of Southeast Asian students. By providing scholarships, we hope to encourage and enable recipients to attain degrees and pursue their goals. In parallel, we hope to nurture critical thinkers who will lead their communities and our society forward.

## KESAYA NODA, Board Member

On the occasion of the fortieth anniversary of the founding of the NSRCF, I am thinking about the devotion my parents and their friends had for this fund and the students it supports. I almost wrote “fierce devotion,” but I hold back from the phrase because “fierce” belies the joy they took in their work for it. My parents drove miles to the early, in-person board meetings, always returning home nourished by deep friendships, much laughter, and the fulfillment of one more year of shared hopes and a shared vision.

My ongoing involvement with the NSRCF is a joy for me. In these difficult times, more than ever, I *need* to look beyond my immediate community and grasp hands with the students and families I reach through the NSRCF. The young are the treasures and the hope of every community. Through NSRCF scholarship awards, we have the privilege of celebrating and supporting admirable, determined students who, I know, will give back twentyfold and more of whatever they receive. Please join us when we once again hold in-person awards



ceremonies. Like me, you will find that meeting the students and their families is exhilarating - a shot of happiness and hope.

## KEN KUMEKAWA AND THE KUMEKAWA FAMILY, Ryozo Glenn Kumekawa Scholarship

I imagine my father at a rail station in 1945, confident but insecure about his journey ahead. It had been a long journey, one about to get longer as it took him from the cityscapes of the Bay Area to the desolate Utah desert. But he knew he had the support of the National Japanese American Student Relocation Council and that helped him take the next steps forward.

35 years later and many more miles traveled, my father and his generation found themselves in the position to help refugees from Southeast Asia and to acknowledge those that likewise helped them so many years ago. Thus the Nisei Student Relocation Commemorative Fund was created to support those who wanted to take those next steps as well.

On the 40th anniversary of the NSRCF, we look to the award recipients, past and present, to continue their journey and fulfill their promise. Congratulations to all.

## HANNAH TANI HOGAN, Nisei, Illinois

### Congratulations NSRCF

A flash-back appears! The World War II crisis.

We are forcibly removed to those barbed wire fenced destinations. My yearning to depart from the desolation. To “Go East.” To fulfill a higher education degree.

Pause:

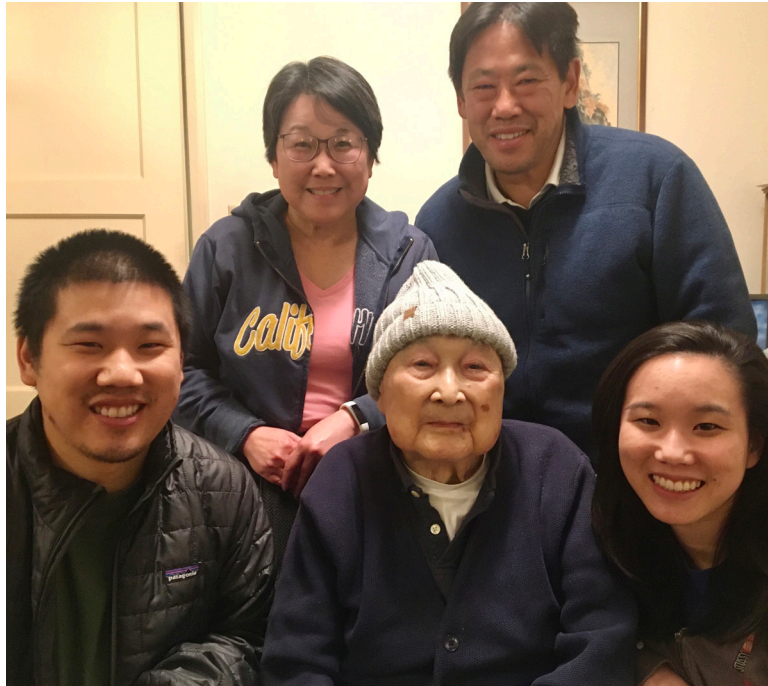
On this 40th Anniversary, do remember all of the compassionate and tireless sponsors who made my impossible dream come true.

Today, for the 2020 Class. Look beyond this crisis. Discover the wide range of marvelous opportunities before your eyes. Good luck! With deepest regards, Hannah Tani Hogan





# MOCHIZUKI-CHU FAMILY, Hisaye Hamaoka Mochizuki Scholarship



**Congratulations to NSRCF on forty fantastic years!!**

Since 2010, when the Hisaye Hamaoka Mochizuki Scholarship was established, we have proudly watched NSRCF grow and flourish. We have seen hundreds of scholarships awarded, watched a new generation begin to take the helm of the committee and witnessed the expansion of the target recipients to include Somali as well as Southeast Asian students. What wonderful growth.

Many thanks to the American Friends Service Committee for being the inspiration, to the board for always striving to fulfill the vision of the committee founders, and to all those who have served on the local scholarship committees for their time and commitment to putting scholarship monies into deserving hands.

We are looking forward to seeing what the next forty years has to offer.

In honor of Akio Mochizuki, Tara Mochizuki, Jeffrey Chu, Timothy Chu and Elizabeth Chu

## PHUOC V. LE, MD, MPH 1994 NSRCF recipient, California



When I think about what the essence is of NSRCF's mission and activities over the past 40 years, the one word that comes to mind is solidarity. The original group of extraordinary people who established NSRCF knew what

it was like to struggle as members of the oppressed, the "other," the marginalized. They took that deep suffering and redirected that experience into the manifestation of what is meant by solidarity. In our society today, among an increasing

recognition that all of our lives are interconnected, that an injury to one is an injury to all, and that we have such a long way to travel toward a just nation, the NSRCF continues to be a signal of what is needed most – solidarity.



# THE HAYASHIDA FAMILY, Michihiko and Bernice Hayashida Scholarship



photo taken circa 1985

## Congratulation on the 40th Anniversary of Bringing Hope

Our dad, Michihiko Hayashida, in a letter to a friend, wrote: “Even at our darkest moments there were those who made profound impacts on our lives, who at personal sacrifice, reached out to give us hope. We were very fortunate to be touched by such people.”

Both our parents understood the transformative power of education and its potential to level what still remains an uneven playing field. Their legacy of improving people’s lives through higher education lives through the recipients of the NSRCF. It meant a lot to them, and

therefore means a lot to us, to know that the scholarship addresses issues of equity that can affect access.

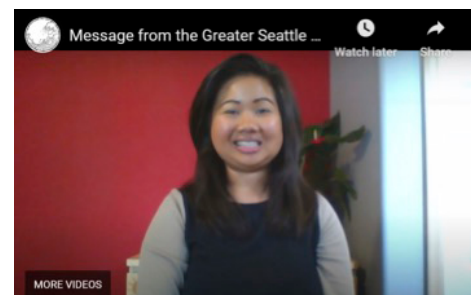
We were raised with not only the value of education but more significantly, the importance of gratitude for what we have been given and paying it forward through service to others. Our parents recognized and were deeply grateful for the support of others who gave them hope. It is our hope that through the NSRCF sustainable progress towards social equity will be realized by future generations.

## BOBBY AND LILLY TAKATSUKA, Nisei, Seattle

Congratulations on the 40th Anniversary. As a recipient of aid from the Society of Friends - Quakers to attend college, it is gratifying to be able to return the favor by supporting the students selected by NSRCF.

## 2020 AWARDS GALLERY

Visit: [nsrcfund.org/scholarships/2020-awards](https://nsrcfund.org/scholarships/2020-awards)



# NSRCF NAMED SCHOLARSHIPS, LEGACY AND TRIBUTE FUNDS

The Nisei Student Relocation Commemorative Fund's annual awards are made possible by contributions from individuals and organizations. Named Scholarships, Legacy Funds and Tribute Funds enable anyone, including organizations, to honor, commemorate or pay tribute to individuals, groups or events. If you would like information about establishing a Named Scholarship (minimum \$20,000), a Legacy Fund (minimum \$10,000) or a Tribute Fund (minimum \$2,000), please contact: NSRCF, 19 Scenic Drive, Portland, CT 06480.

The following funds have been established, and are designated by who created them, \* and (). The Board of Directors is grateful for the generous support these funds have received, as noted, during the period from October 1, 2019 to September 30, 2020.

## NAMED SCHOLARSHIPS

### American Friends Service Committee\*

Judy Nakadegawa

### Hiroko Fujita and Paul Fukami (Joyce M. Fukami)

### Michihiko and Bernice Hayashida\*

Frances Hayashida  
Hayashida Family Trust  
Susan Hayashida  
Margaret Murata

### Nobu (Kumekawa) and Yosh Hibino

(Michihiko and Bernice Hayashida,  
family and friends)

Sue Bowers  
Stephen & Karen Fugita  
Frances Hayashida  
June Hibino  
Liz & Steve Hibino  
Shirley Hibino  
Cathy Inamasu  
Barbara & Gary Kitagawa  
Jim & Toby Kubota  
Forrest & Lorraine Minor  
Laura Misumi  
Michio Nakajima  
Jack & Nancy Sneider  
Diane Hibino & John Triplett

### Shim and Chiyo Hiraoka (Ann Graybill Cook and Michael Hoshiko)

### Tama (Yoshimura) and Jiro Ishihara

(Jiro Ishihara, NSRCF board of  
directors, family and friends)  
Margaret Murata

### Yutaka and Maureen Kobayashi (Maureen Kobayashi) John Dubeck & Susan Hotine Walter Zydlewski

### Ryozo Glenn Kumekawa (Joanne K. Kumekawa, family and friends)

Jane Beckwith  
Harvey Goldstein  
Wallace Kido  
James McIlwain  
Margaret & Prentice Stout  
Nobuko Yamasaki

### Colonel Joseph Y. Kurata (Col. Joseph Y. Kurata)

**In memory of Col. Kurata**  
Jean Hibino

### Audrey Logan (Kesaya Noda)

### Alice Abe Matsumoto

(Family and friends)  
Hannah Hogan  
Steven Matsumoto  
Michio Nakajima  
Patricia Tanaka

### Hisaye Hamaoka Mochizuki (Akio Mochizuki)

Harley & Judy Inaba & Family  
Robert & Lynne Ishikawa  
Sharon Kotabe in honor of  
Akio Mochizuki  
Akio Mochizuki  
Tara Mochizuki & Jeffrey Chu

### **In memory of Akio Mochizuki**

Thomas & Ryuko Helm  
Jean Hibino  
Leslee Inaba-Wong  
Gayle & Craig Wong

### Koh, Mitsu, and Dr. Kotaro Murai

(The Murai Family)  
Koh & Nanci Murai

### Dr. Kenji Murase (Family and friends)

Emily Murase  
Geoffrey Murase  
Miriam Murase

### Kaizo and Shizue Naka (F. Robert and Patricia Naka)

*continued on next page*

**Lafayette and Mayme Noda**  
(Walter N. Frank)  
Noreen K. Enkoji  
Evelyn Nakano Glenn  
Joan Longcope  
David Noda & Kay Nishiyama

**Gladys Ishida Stone**  
(Gladys Ishida Stone)  
Hannah Tani Hogan

**David Mitsuo Takagi**  
(NSRCF board of directors, family  
and friends)  
Deborah & Bill Handschin  
Barbara Takagi  
Keiji Takagi  
Miye Takagi in honor of  
Mary E. Takagi's birthday

**Michi Nishiura Weglyn\***

**Kay Yamashita**  
(Yutaka Kobayashi)  
Neal Dion & Jennifer Gladden  
Margaret Murata  
Martha Uyeki

## LEGACY FUNDS

**Thomas R. Bodine\***  
Elizabeth Muench  
Warren Uchimoto

**Woody and Betty Emlen\***  
Warren Uchimoto

**Joseph R. Goodman**  
(Ryozo G. Kumekawa)  
Kerry King & John Goodman

**Suezo and Kikuyo Hayashida**  
(Michihiko and Bernice Hayashida)  
Frances Hayashida

**Julius Ishida**  
(Calvin Ishida)  
Calvin Ishida

**Dr. Chosaburo Kato**  
(Kane and Rose Senda)

**Fred Kishi**  
(Susan M. Kishi)  
Ruth Ann Kishi & Michael Woodring  
Susan Kishi & David Schuricht

**Harutoyo and Haru Kobayashi**  
(Yutaka and Maureen Kobayashi)

**Livingston Yamato Colony  
Pioneers**  
(Lafayette and Mayme Noda)

**Eleanor and Emil Sekerak**  
(Michihiko and Bernice Hayashida)  
Frances Hayashida

**Hikokuma and Koyoshi Shigeno  
Memorial**  
(Ted K. Shigeno, Agnes Miyakawa,  
Rosie Tani, and Florence  
Kawagoe)

**Bobby and Lily Takatsuka**  
(Bobby and Lily Takatsuka)  
Bobby and Lily Takatsuka

**Trudy King Toll\***  
Warren Uchimoto

## TRIBUTE FUNDS

**David Aman**  
(Lafayette and Mayme Noda)

**Ann Graybill Cook\***

**Monroe E. Deutsch\***

**Kei Enomoto**  
(Jiro J. Enomoto)

**Emi Kimura Fujii**  
(Midori Fujii and Sono Fujii)  
Sono Fujii & Claudio Katz

**Yasuko Fujita**  
(Joyce M. Fukami)

**Junzo and Ito Hibino**  
(Yosh and Nobu Hibino)

**Gordon Hirabayashi**  
(Elizabeth Muench and Bruce Hawkins)  
Bruce Hawkins  
Elizabeth Muench

**Tom Imagawa Memorial Fund**  
(Mrs. Tom Imagawa and Family)

**James Zenichi Imamoto**  
(Grace Imamoto Noda)  
Alice Takemoto

**Frank and Hisako Ishikawa Family**  
(Michi I. Tashjian)

**The Issei Generation**  
(Lillian Ota Dotson)

**Elinor Umezawa Kajiwara**  
(Elinor U. Kajiwara)

**Jin and Kay Kinoshita**  
(Jin and Kay Kinoshita)

**Yuri and William Kochiyama**  
(Michi and Walter Weglyn)

**Haru and Keiroku Kumekawa**  
(Nobu and Yosh Hibino)

**Denji Dan Kuniyoshi**  
(Anna Kuniyoshi)  
Anna Kuniyoshi

**Judge William M. and  
Victoria Marutani**  
(David K. Nitta)

**Susan T. Matsumoto**  
(Alice and Yo Matsumoto)  
Steven Matsumoto

*continued on next page*



**Nobu Miyoshi**  
(Yoshiko and Ryozo Glenn  
Kumekawa)

**Takashi and Yuri Moriuchi\***

**My Immigrant Ancestors**  
(Marcia Mau)

**Naka Endowment**  
(Fumio Robert Naka)

**John W. Nason\***  
(Yoshiko and Ryozo Glenn  
Kumekawa)  
Warren Uchimoto

**Dr. Lee Lowry Neilan**  
(Yoshiko and Ryozo Glenn  
Kumekawa)

**Prof. Mabel M. Nemoto**  
(Atsuko Hirai)

**Masamoto and Kimi Nishimura**  
(Rhoda Nishimura Iyoya, Dwight  
Nishimura, Joseph Nishimura,  
Jonathan Nishimura)

**Shichiro and Sachi Noda**  
(Lafayette and Mayme Noda)  
Janice Abe

**Sekizo and Kinuko Nomura**  
(Mary S. Ozamoto)

**Chiura and Haruko Obata**  
(Eugene Kodani)

**Bob O'Brien**  
(Mrs. Chihiro Kikuchi)  
Amy Iwasaki Mass

**Fumi Yokoyama Ono**  
(Janice Ono, Frank Ono, R.  
Dana Ono)

**Takako Tanioka Paul**  
(Anna Kuniyoshi)  
Anna Kuniyoshi

**Madeleine Haas Russell/  
Columbia Foundation**  
(Ryozo Glenn Kumekawa)

**Margaret Cosgrave Sowers\***

**Bill Stevenson\***

**Taichi and Sachiye Takagi**  
(David and Barbara, and Mary  
Elizabeth Takagi)  
Keiji Takagi  
Miye Takagi

**Charles William Tanioka**  
(Anna T. Kuniyoshi)  
Anna Kuniyoshi

**UC Berkeley Student YWCA**  
(Mary Yamashiro Otani)

**Yoshiko Uchida**  
(Virginia Scardigli)

**Paul R. Wada**  
(Yasuko and Yukio Wada)  
Tami Suzuki & Richard Eijima

**Yukio Wada**  
(Yasuko Wada and Family)

**Michi N. and Walter Weglyn**  
(Robert H. and Agnes Suzuki,  
Lafayette and Mayme Noda, and  
Nobu Hibino)

**Mabel Sheldon Williams\***  
Frances R. Ogasawara

**Reiko Azumano Yasui**  
(George I. Azumano)  
Homer Yasui  
Rachel Yasui

\* The NSRC Fund board of directors established these and the following funds in the hope that what happened during World War II will never be forgotten, and that future generations will have the opportunity to receive a higher education:

**Amache Alumni Tribute Fund**

**Gila River Alumni Tribute Fund**

**Heart Mountain Alumni Tribute Fund**

**Jerome Alumni Tribute Fund**

**Manzanar Alumni Tribute Fund**

**Minidoka Alumni Tribute Fund**

**Poston Alumni Tribute Fund**  
Gil & Maeona Mendelson

**Rohwer Alumni Tribute Fund**

**Topaz Alumni Tribute Fund**

**Tule Lake Alumni Legacy Fund**

*continued on next page*

# THANKS TO OUR SUPPORTERS

Thank you to the following contributors to the general fund:

Syed Arif in honor of Laura Misumi  
Stephanie Klein & Larry Baer  
Tina & Peter Barnet  
Kesaya Noda & Christopher Dye  
in honor of Taka Takayanagi  
Bruce Eejima  
Elizabeth Fox  
Gary K. Hart  
Judith Hijikata  
Hannah Tani Hogan in memory  
of Frances Yamasaki Mori  
Wayne Itano &  
Christine Yoshinaga Itano  
Jack & Sue Kennedy  
John Kirihara  
Christopher Leonard  
Patrick Nakamura  
Jim & Harriet Nakano  
Ronald & Irene Nakasone  
Thomas Nishi  
David Noda & Kay Nishiyama  
Ken Nomiyama  
Mariette Norbom  
Keith Schuricht  
Tak Shirazawa  
Sofia Sequenzia & John Shostrom  
George Suzuki  
Kenji & Mary Tomita  
Peter Trinh  
Laura Uba  
Mary Yee & Paul Uyehara  
Paul Watanabe  
Nobuo Yutani

Special thank you to our Greater Seattle area supporters who helped make 2020 a huge success:

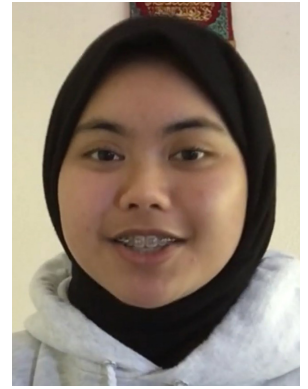
Julia Ahn  
Linda Ando  
Sarah Baker  
Bill Tashima and Chris Bentley  
BiHoa Caldwell  
Lisa Chan  
Sharon Cho  
Kumnith Chum  
Barbara Conlin  
Doug Cotanche  
Cora Edmonds  
Polly Fabian  
Frank Fukui  
Scott Furukawa  
Julian Griesser  
Brenda Handley,  
Gobo Enterprises  
Gary Howlett  
Diana Huang  
Howard and Kimberly Huon  
Alicia Huong Dang  
Daniel Jo and Suejin Park  
Mara Kage  
Meatra Keo  
Ben and Longhan Khau  
Tona Khau  
Seila Kheang  
Amanda Kim  
Conor Kleweno

Alix Koyama  
Jeffrey Lau  
Jerry Quinn Lee  
Lucy Li  
Bely Luu  
Tomas Madrigal  
Juliana Morris  
Islanda and Tim Naughton  
Thu-An Nguyen-Lai  
Momo Nisen  
Rattana Noeun  
Huy Phung  
Kritin Puhl  
Yevin Roh  
Carrie Rubenstein  
Pavan Samprati  
Mary Shen  
Stanley Shikuma  
Khamph Southisombath  
Jeff Thungc  
Stephen Uy  
Star Wang  
Andy Wen  
Eilleen Yamada-Lamphere  
  
JACL - Puyallup Valley Chapter  
JACL - Seattle Chapter  
Microsoft

## JJ UBONWAN SAEUNG, DDS 2004 NSRCF recipient, Michigan

It is hard to believe that 16 years have gone by since I received an NSRCF scholarship. Being recognized for my hard work throughout high school helped propel me forward as I journeyed through college and found my passion in dentistry. Today I am proud to be able to treat oral diseases and alleviate pain for my community. Thank you for believing in us, your organization is crucial in making many kids' dream come true. Congratulations on the 40th Anniversary!

# NISEI STUDENT RELOCATION COMMEMORATIVE FUND 2020 NEWSLETTER



NISEI STUDENT RELOCATION COMMEMORATIVE FUND, INC.  
19 Scenic Drive  
Portland, Connecticut 06480

## MISSION STATEMENT

The NSRC Fund is a 501(c)(3) organization founded in New England that annually awards scholarships to students from underserved communities pursuing higher education. The NSRC Fund was established in 1980 by second generation Japanese Americans, Nisei, in gratitude to the National Japanese American Student Relocation Council. The Council made it possible for the Nisei to leave the World War II prison camps for colleges and universities across the United States. The NSRC Fund encourages inter-ethnic collaboration and promotes public awareness and understanding of the forced removal and internment of 120,000 persons of Japanese ancestry during World War II.



**BOARD OF DIRECTORS**

Jean Y. Hibino  
Stephen Y. Hibino  
Elizabeth Sequenzia Hibino  
Islanda Khau Naughton  
Yutaka Kobayashi  
James McIlwain  
Laura H. Misumi  
Kesaya E. Noda  
Keith K. Schuricht  
May O. Takayanagi  
Phitsamay Uy  
Paul Y. Watanabe



**NISEI STUDENT RELOCATION  
COMMEMORATIVE FUND, INC.**

19 Scenic Drive, Portland, Connecticut 06480

Fall, 2020

[Message delivered by Paul Watanabe, President of the Board of Directors, to this year’s scholarship recipients.]

www.nsrcfund.org

I want to give you my personal congratulations and on behalf of the rest of the members of the board of directors on your wonderful accomplishment as recipients of scholarships for 2020. I and some other members of the board wanted to travel to Seattle to give you our personal greetings. I had already bought tickets on Amtrak along with my wife to take the train across the country to Seattle. But alas that trip and a lot of other travel is going to have to wait until some future time.

There is a famous saying, “may you live in interesting times.” And assuredly these are about as interesting of times as we’ve ever seen not only in American history but in world history. This is a period of time that they are going to be reading about in history books for all time. It is a memorable time, therefore, for world history, American history and for your and your family’s history because of your accomplishments graduating from high school and beginning your new career in college. I’m sure you will be well prepared to take on the challenges of a new and interesting world. We want to give you our support as much as possible and to the wonderful people who stand behind you.

One thing that I would have asked you to do if I saw you in Seattle personally would be to take a moment and learn something about the Nisei Student Relocation Commemorative Fund and the wonderful people who created a legacy that makes this scholarship possible. Almost 80 years ago some students like you, in this case Japanese Americans, yearned for and dreamed about going to college. But their dreams were interrupted by World War II when their families, like those of other Japanese Americans, were placed in America’s concentration camps. These students didn’t feel like there was any hope that they could continue their education. Except there was a group of strangers who took it upon themselves to support these students so that they could continue their education beyond the camps and continue their dream of going to college.

Many of the people who were assisted decided that they wanted to give back. They wanted to show their generosity to a new generation of students who needed support just as they had received many years before from strangers they didn’t even know. That is what this scholarship is built on - the desire of people to provide support for capable and promising students like you. I think it is a wonderful legacy and story, and one that I hope you will continue as you gain success in your lives and careers because of your college education. Remember with gratitude the generosity that was bestowed upon you.

Congratulations to you, and thank you to your family and friends and all those who trusted and had confidence in you and helped make this moment possible. We’re proud of you and are confident you will contribute to these interesting times.

✂ \_\_\_\_\_

**NISEI STUDENT RELOCATION COMMEMORATIVE FUND, INC.**

19 Scenic Drive, Portland, Connecticut 06480

info@nsrcfund.org ▪ www.nsrcfund.org ▪ FEIN 06-1021906

I/we would like to “extend a helping hand” with my/our tax-deductible contribution of \$ \_\_\_\_\_

(Please make check payable to NSRC Fund; or via PayPal at www.nsrcfund.org)

Name(s) \_\_\_\_\_

Address: \_\_\_\_\_

City/State/Zip: \_\_\_\_\_ Phone: \_\_\_\_\_

Add to an existing Tribute, Legacy or Named Scholarship Fund called: \_\_\_\_\_

Send information about how to establish NSRCF Tribute, Legacy and Named Scholarship Funds

Send the annual newsletter to me by email: \_\_\_\_\_

(print your email address)